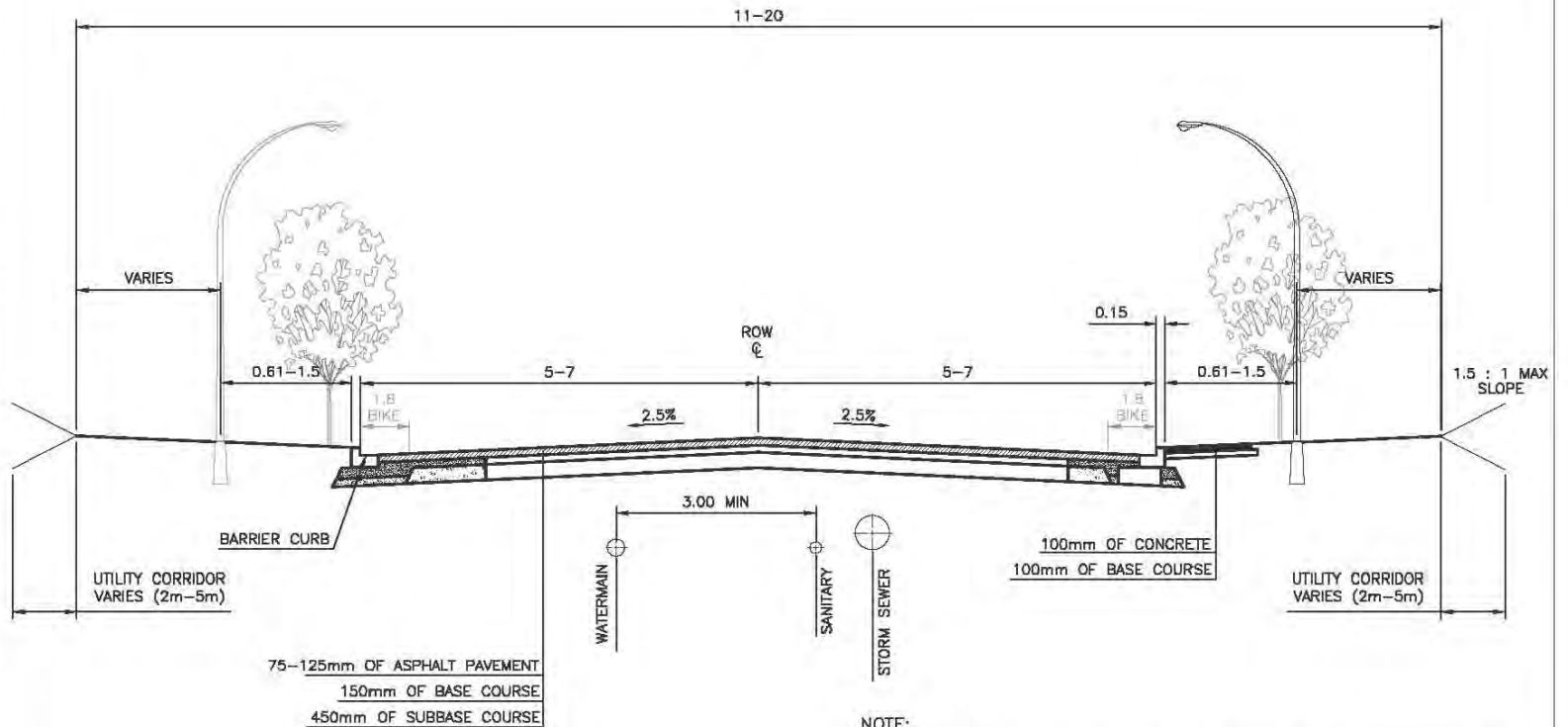


BYLAW NO. 7162  
 SCHEDULE C – DELTA SUPPLEMENTARY DRAWINGS AND MAPS

DATE	REVISION	No.	BY

THE CORPORATION OF DELTA ENGINEERING DEPARTMENT		ANNACIS ISLAND CROSS SECTION COMMERCIAL/INDUSTRIAL
DSN.	DRNL. M.M.	
CHKD.	APRVD.	
SCALE	N.T.S.	
DATE	2015-05-03	
		DWG. No. <b>L 2.10</b>
		RVSN.



- NOTE:**
1. HYDRO, TEL & GAS LINES MAY BE INSTALLED ON EITHER SIDE OF RIGHT-OF-WAY.
  2. UTILITY SERVICES SHALL BE INSTALLED PRIOR TO FINAL ROAD PAVING, OR MAINS SHALL BE INSTALLED ON BOTH SIDES OF RIGHT-OF-WAY. TRENCHES THROUGH NEW FINAL PAVEMENT FOR INSTALLATION OF MAINS OR SERVICE CONNECTIONS WILL NOT BE PERMITTED.
  3. PAVEMENT SHALL BE LAID IN TWO LIFTS, INITIAL LIFT OF 50mm BY THE OWNER AND FINAL LIFT OF 50mm.
  4. ROAD ALLOWANCE MUST BE SHAPED TO FULL WIDTH OF RIGHT-OF-WAY WITH CUT AND FILL SLOPES ON PRIVATE LAND.
  5. SECOND STREET LIGHT WHERE APPLICABLE (NEWER DEVELOPMENTS).

**NOTE:**  
 ALL DIMENSIONS SHOWN IN METRES  
 UNLESS OTHERWISE NOTED.

ANNACIS ISLAND TYPICAL SECTION