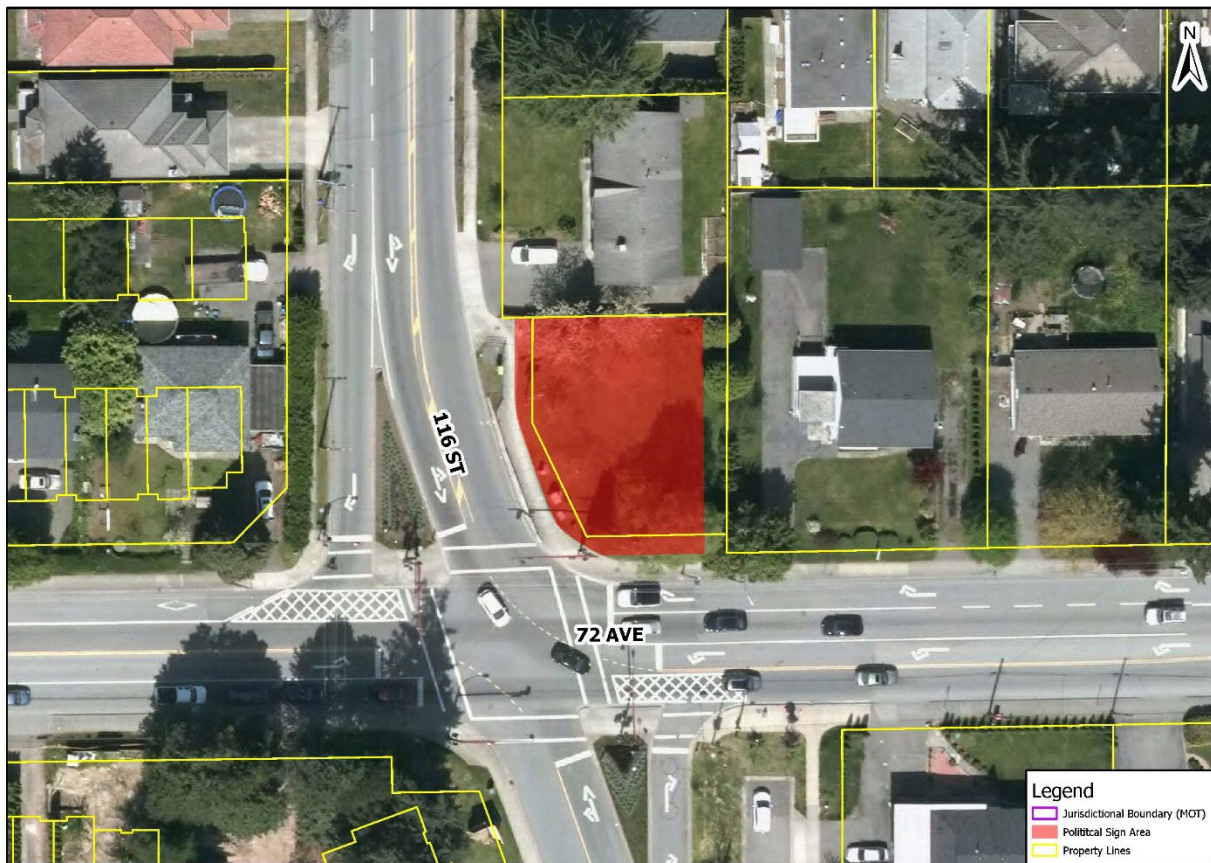


Location Number: 1

Northeast corner of 72 Avenue and 116 Street (11623 72 Ave)



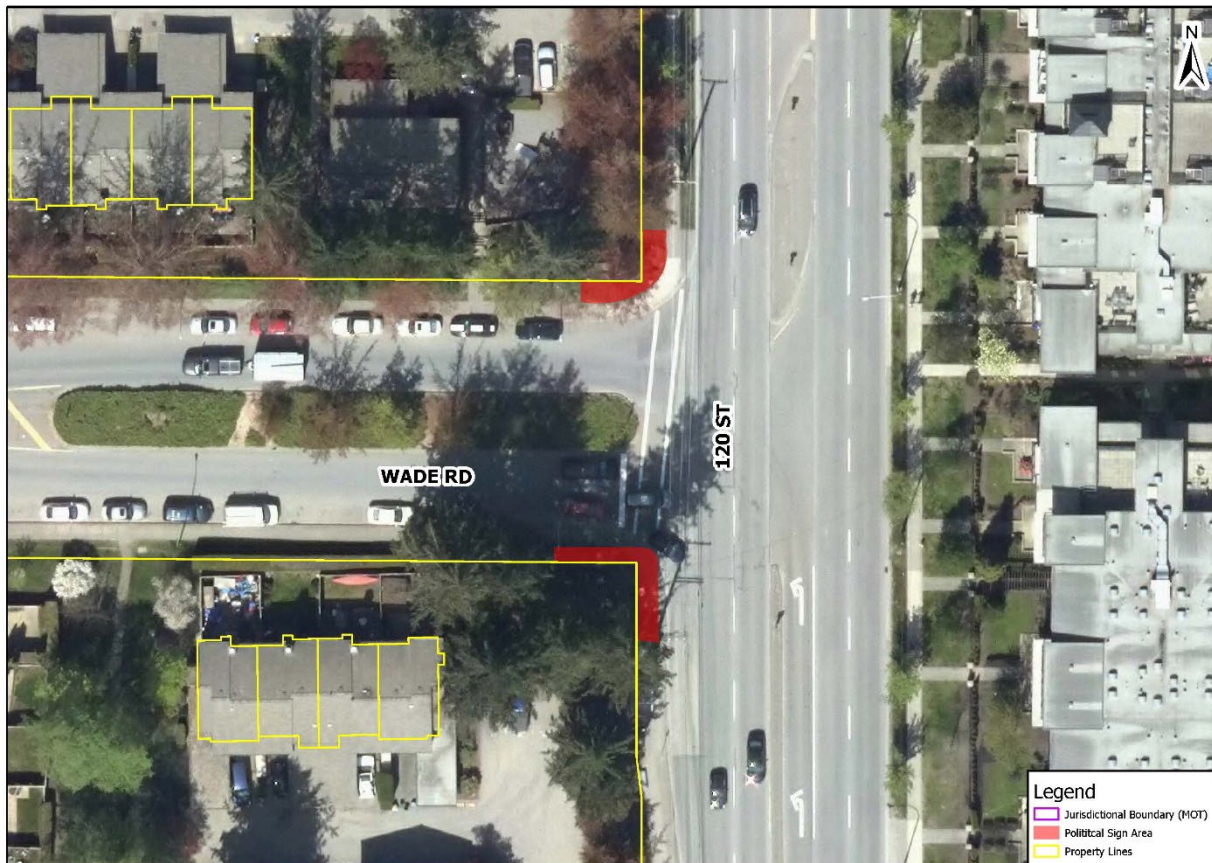
Location Number: 2

North and South side of 72 Avenue west of the BNSF Railway
Overpass



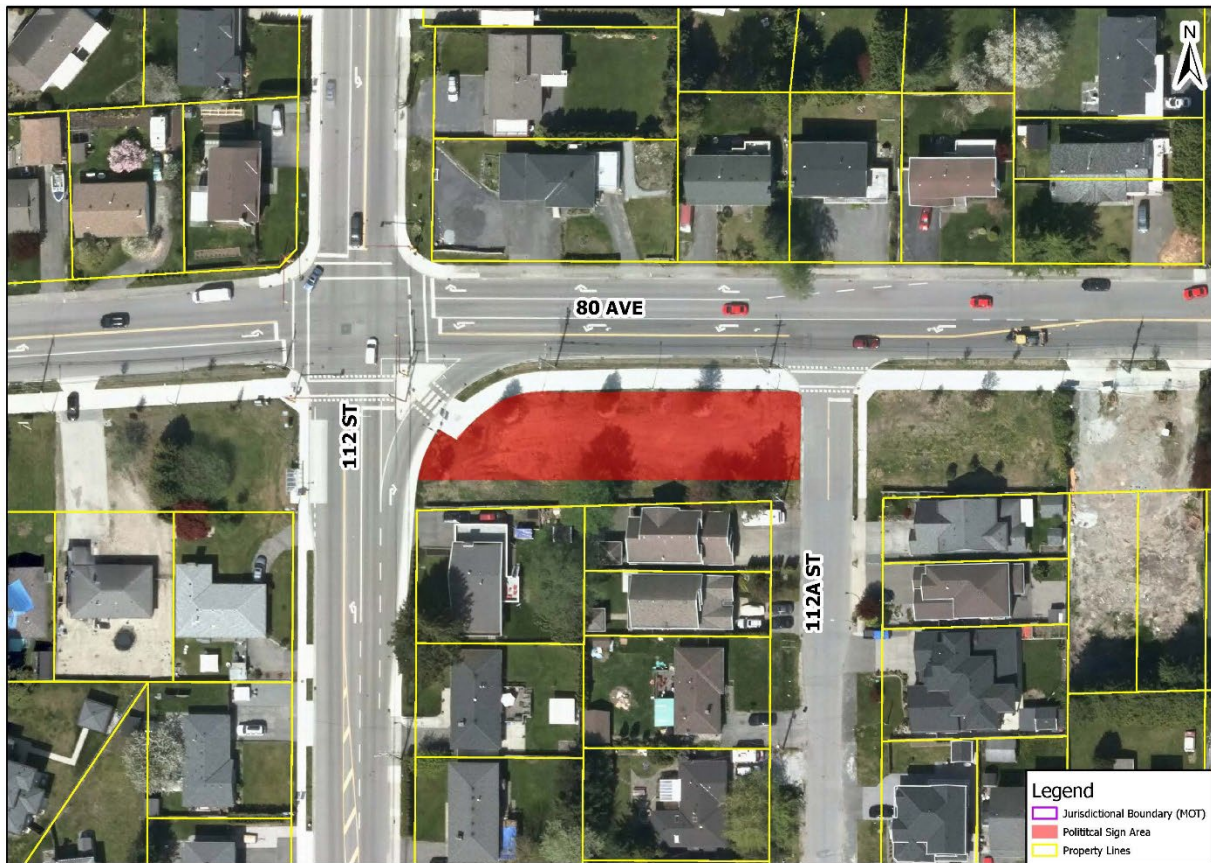
Location Number: 3

Northwest and Southwest corners of Wade Road at 120 Street



Location Number: 4

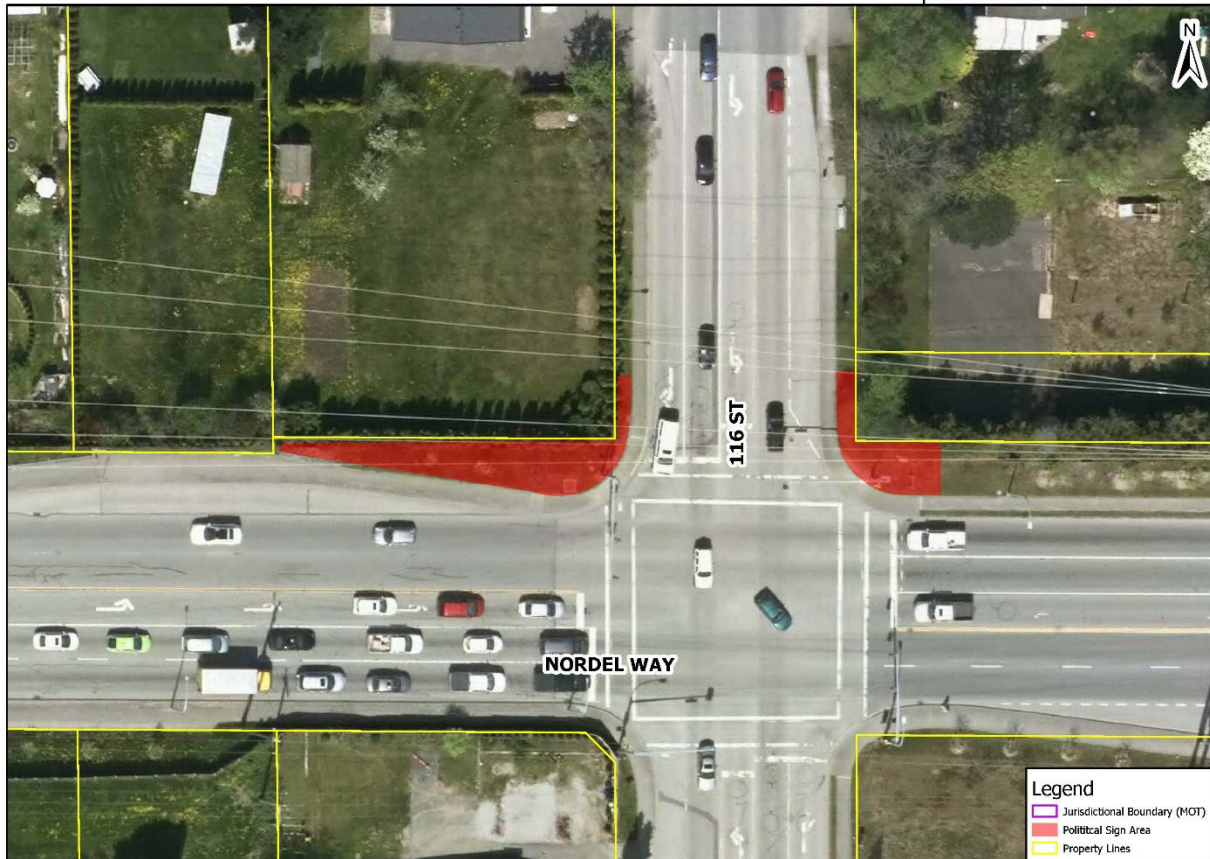
Southeast corner of 112 Street and 80 Avenue



Location Number: 5

Northwest and Northeast corners of Nordel Way and 116 Street

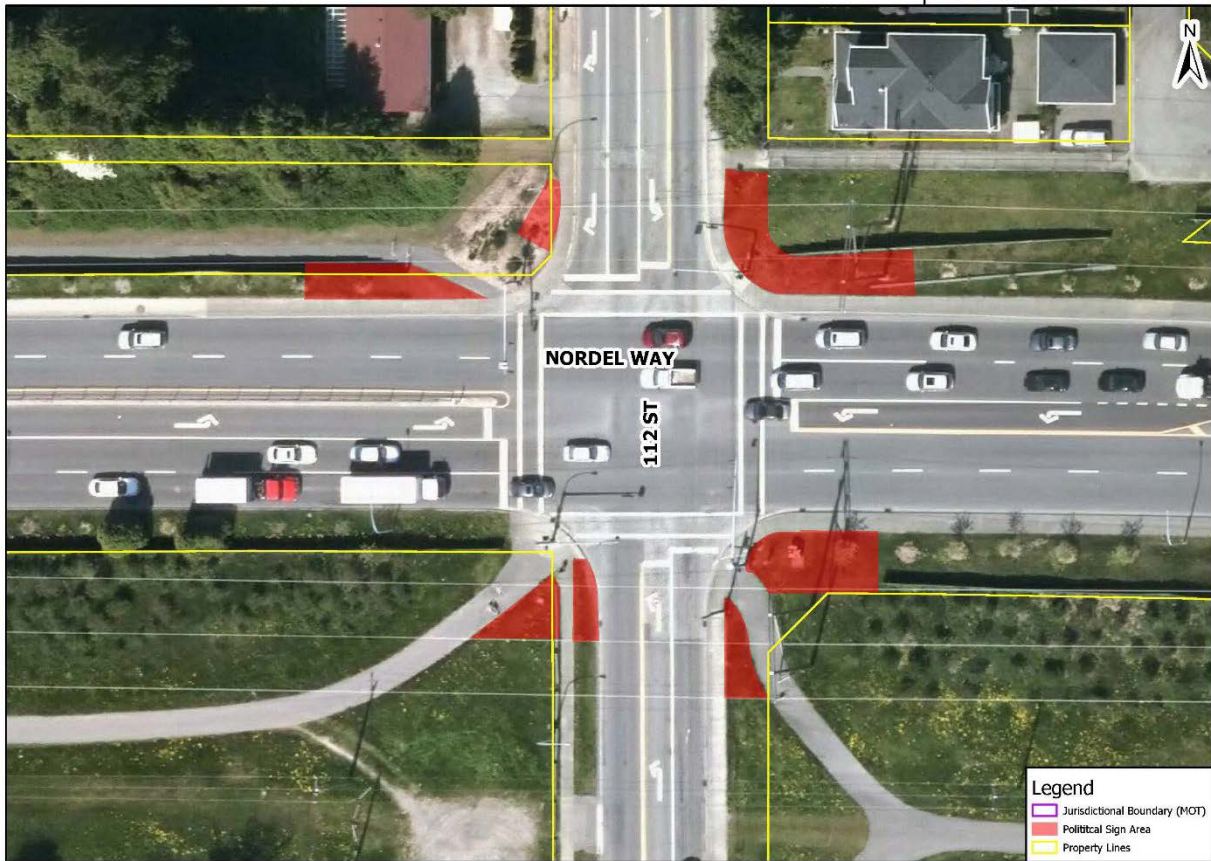
Signs in red shaded areas must be entirely made of wood and must be at least 4.5m from 69kV circuits



Location Number: 6

All corners at the intersection of Nordel Way and 112 Street

Signs in red shaded areas must be entirely made of wood and must be at least 4.5m from 69kV circuits



Location Number: 7

All corners at the Intersection Nordel Way and Shepherd Way

Signs in red shaded areas must be entirely made of wood and must be at least 4.5m from 69kV circuits



Location Number: 8

North side of Nordel Way at 84 Avenue

